



**BONNET GRANDE CUISINE**

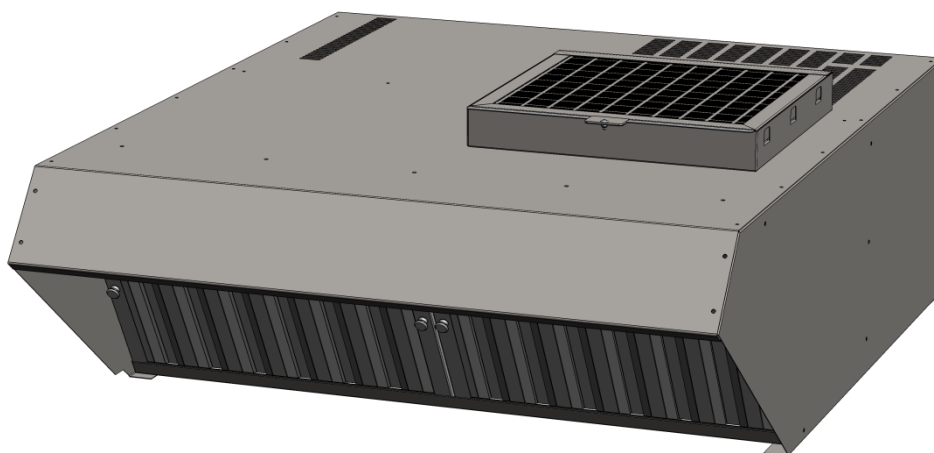
**Registered Office:**

Rue des Frères Lumière - Z.I Mitry Compans

F-77292 MITRY MORY Cedex

**Accessory: Hood for 6 and 10 level GN 1/1 electric BONNET Combi ovens**

**Ref. AC6&11HE**



## HOOD

- \* Hood to fit on all BONNET 6 and 10 levels GN 1/1 electric ovens.
- \* This hood allows an oven to be installed away from an area covered by an existing or dedicated hood.
- \* The system condenses the vapours leaving the chimney and those from the oven door during cooking, guaranteeing user comfort.
- \* All stainless steel construction.
- \* Automatically starts when the door is opened (if the oven is operating) and when steam is detected coming out of the oven chimneys.
- \* Automatically stops after a time lapse.
- \* 2 speed fan.
- \* Equipped with 3 removable mesh filters, machine washable, and an activated carbon filter
- \* Directly connected to the ovens electrical terminals.
- \* The design technology of this hood eliminates the need for any external connections.
- \* *Note: Odours and fumes generated by some cooking processes and/or products will not be entirely eliminated by this hood.*

## NORMS: Conforms to

**EN 60-335-1:** European norm relating to the safety of electrical appliances.  
(French norm: classification index C 73-800).

**IP 25 and IK 9:** Protection indices.

**XP U 60-010:** Hygiene.





**BONNET GRANDE CUISINE**

**Registered Office:**

Rue des Frères Lumière - Z.I Mitry Compans

F-77292 MITRY MORV Cedex

### AC6&11HE



#### **ELECTRICAL connection**

Cable provided for connection to the oven  
Length 3.5 metres



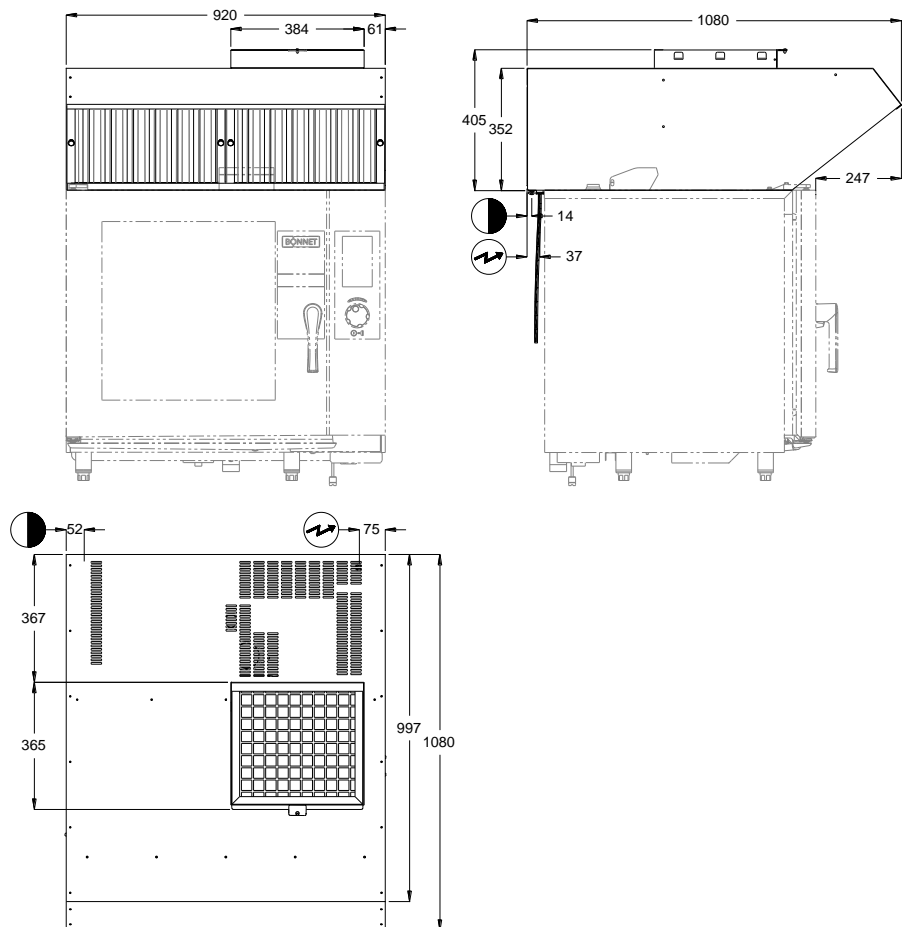
#### **CONDENSATE DRAIN**

The water discharged could be condensate and at very high temperature, use material that is suitable for high temperatures.

There must be a trap between the unit and the mains drainage to prevent odours.

**It is imperative that there is at least 500mm clear** above the hood for it to work correctly.

**Attention:** Always install an oven with a hood in an area with natural ventilation or with an air handling system that complies with current regulations.



#### **MODEL**

B1AC6&11HE

#### **DIMENSIONS (mm)**

Height	405
Width	920
Depth	1080
Height with Hood + Oven	
6 / 10 levels ovens	1240 / 1410

#### **PACKAGING (mm)**

Width	1070
Depth	550
Height	1300

#### **WEIGHT (KG) (gross / net)**

66 / 43



#### **ELECTRICITY** (Single phase 230V+E)

Power (kW)	230V 1 a.c.	0.20
Max. Intensity(A)	230V 1 a.c.	1.30



#### **CONDENSATE DRAIN**

Condensate temperature	Approx. 98°C
Connection	10mm diameter unthreaded + pipe 2 metres long